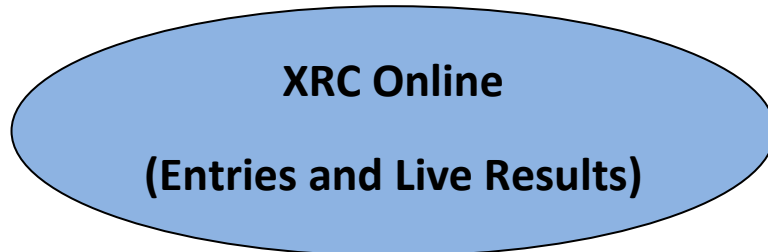


Solutions

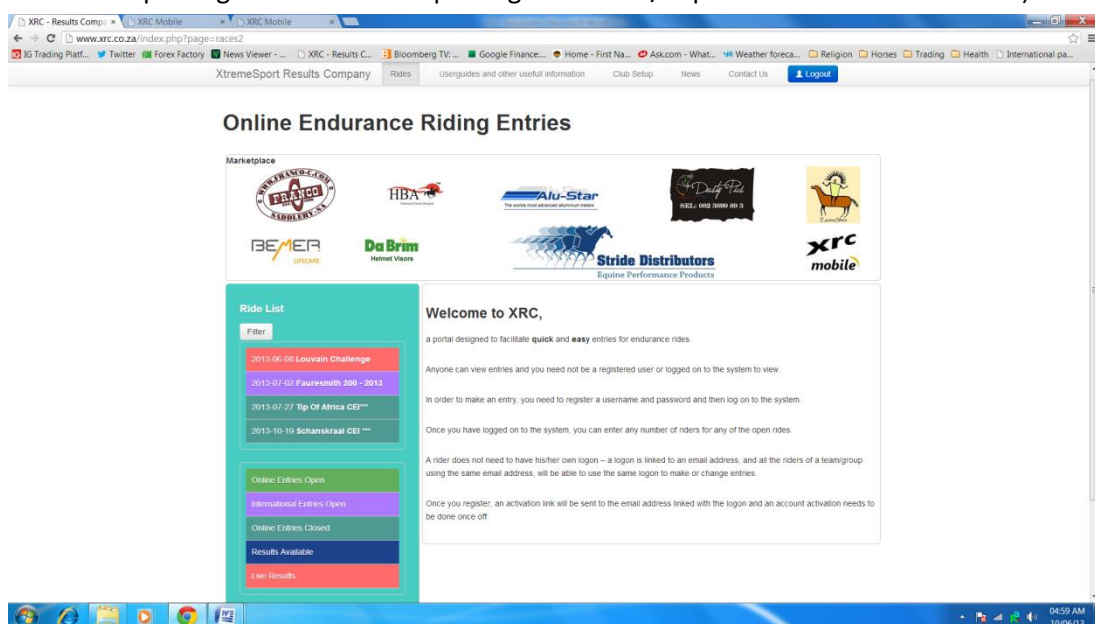
We specialise in producing event results for extreme sports such as endurance riding. We offer a cradle to grave solution, starting with **online entries**, providing **ongoing progress results during the event**, and ending with a **final event result** from which the participant can evaluate his performance and goals during the event.



The system was launched in March 2013 and has handled a number of rides already, including two national rides (SAIC and Fauresmith 200). *XRC Online* is evolving all the time and new features are added as Organising Committees and users require it. *XRC Online* started as just a **portal** where **entries** can be made, but soon thereafter was used to post **preliminary ride results** as well, so that riders could check their times before results are submitted to the official archives. It then evolved into a portal that could provide **live results** during the event, so that riders could check their statistics as the ride went on, including departure times for next loop and stats for previous loop (**electronic time-ticket**), depending on whether internet facilities are available at ride base.

What do you need to use XRC Online?

You **do not need to purchase anything**. The system is rented out on a per entry basis, which includes any system screen changes you might need for your specific ride. Simply contact us on admin@xrc.co.za and we will advise what information we need in order to capture your ride on the system. We will assist your first time users in getting familiar with the system, and will also provide telephonic support for your timekeeper and ride secretary at the ride (with regards to importing of entry data and exporting of data for web posting of starters/departure lists and live results)



Live Results

120.1km - ERASA - H/W

Daynumber	Rider	Horse	Tot Time	Avg Speed	Start Time	Team	
10191	GERBER	KING	4:21:39.00	16.029	-	06:30:00	Details
1145	CILLIERS	PAKA	4:30:22.00	15.5123	-	06:30:00	Details

120.1km - ERASA - L/W

Daynumber	Rider	Horse	Tot Time	Avg Speed	Start Time	Team	
984	VAN BREGDA	JAHAN JED	4:07:30.00	16.9455	R - Riders Chose	06:30:00	WPL Details
653	HOBSON	BLAKERIDGE SHAKIRA	4:48:24.00	14.6439	-	06:30:00	EPL Details

120.1km - ERASA - S/W

Daynumber	Rider	Horse	Tot Time	Avg Speed	Start Time	Team	
F	FLINT	MONT BLANC UNIQUE	4:08:03.00	16.9079	-	06:30:00	WPS Details
1242	GELDENHUIS	INDI	4:21:23.00	16.0454	-	06:30:00	EPS Details
1279	DE JAGER	SASHA	4:21:27.00	16.0413	-	06:30:00	WPS Details

XRC Mobile

Time Already on Leg 3:

1 h 4 m 6 s

Rider: GROBBELAAR
 Day Nr: 394
 Horse: HURST LOUNA
 Team:

Leg Number: 1
 Leg Time: 1:47:26.00
 Speed: 16.8987
 Slip Time: 00:00:37

Leg Number: 2
 Leg Time: 1:42:05.00
 Speed: 17.5739
 Slip Time: 00:00:08

[Back](#)

© 2013

XRC Time

(Real Time Timekeeping)

XRC Time started out as “Alan’s System” in 1984. It has evolved over the years and changed with the sport. *XRC Time* is currently being used by a number of timekeepers in South Africa and Namibia, for compulsory hold and vetgate type rides. It is time tested, with built-in failsafe mechanisms and **operates in accordance with the rules of the sport.**

What do you need to use XRC Time?

You can **contact one of the accredited timekeepers** that already has all the necessary equipment, or you can **acquire the necessary equipment and accredit your own timekeeper** (on a per club or per union basis).

The basic equipment can be sourced cost effectively on the internet, and existing laptops can be used to run the XRC Time software.

For a basic starter solution you will need :

- 2 x USB ticket printers (@ approximately R1500)
- XRC Time software (R500, downloadable from internet)
- Printer for results and certificates (can use existing club printer)
- Laptops (can use existing club laptops)
(1 laptop for main arrivals, 1 for vet-in if vetgate ride)



Optional extras :

- USB Barcode scanners to stop time instead of using computer spacebar (@ approximately R1500, 1 for arrivals and 1 for vet-in if vetgate ride)
- Barcode cards (one per rider, approximately R10 each)



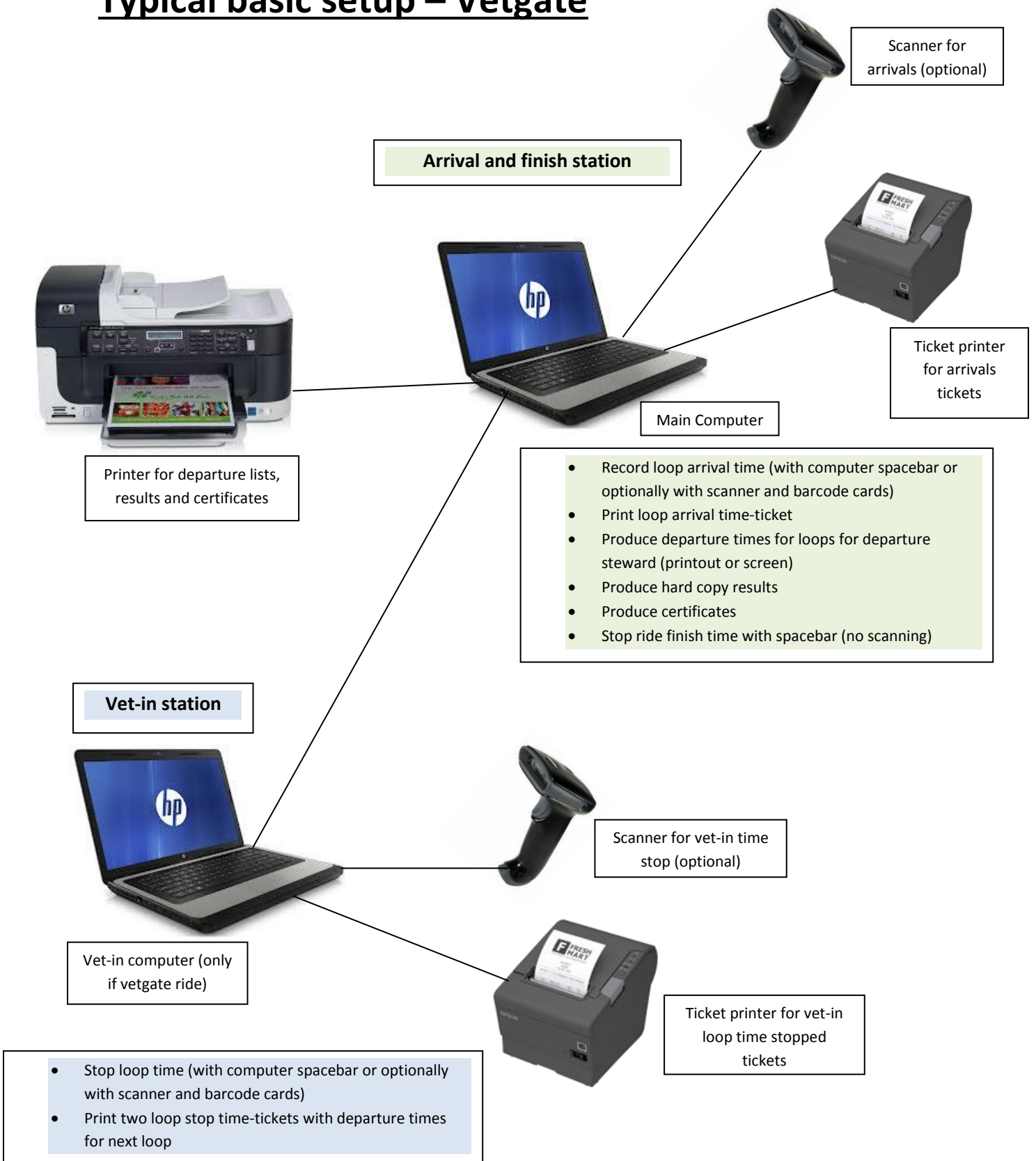
- Additional laptops (1 for departure screen, 1 for live results with internet modem to output data to web server)
- WiFi router to connect computers (instead of cables)



Typical basic setup – Compulsory Hold Ride



Typical basic setup – Vetgate



Typical advanced setup - Vetgate with WiFi network and internet

Arrival and finish station



- Record loop arrival time (with computer spacebar or optionally with scanner and barcode cards)
- Print loop arrival time-ticket
- Produce hard copy results
- Produce certificates
- Stop ride finish time with spacebar (no scanning)



WiFi router to network all devices

Vet-in station



- Stop loop time (with computer spacebar or optionally with scanner and barcode cards)
- Print two loop stop time-tickets with departure times for next loop

Departure station



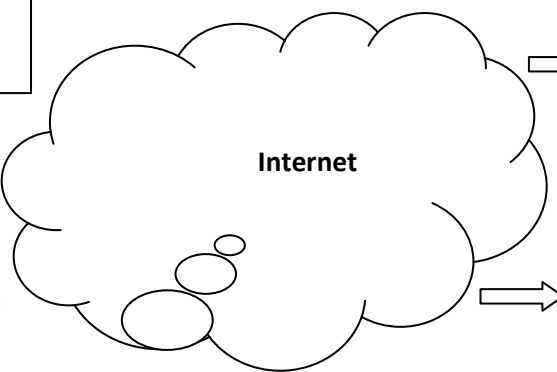
- Displays real-time departure screen for departure steward

Real-time Live Results station
(viewing onscreen and output to web server for internet and smartphone)



Internet modem with connectivity

- Results viewed on results station
- Result exported to XRC webservice for viewing on internet



Real-time Live Results viewed on smartphones
(anywhere in world)



Real-time Live Results viewed on home pc's
(anywhere in world)

